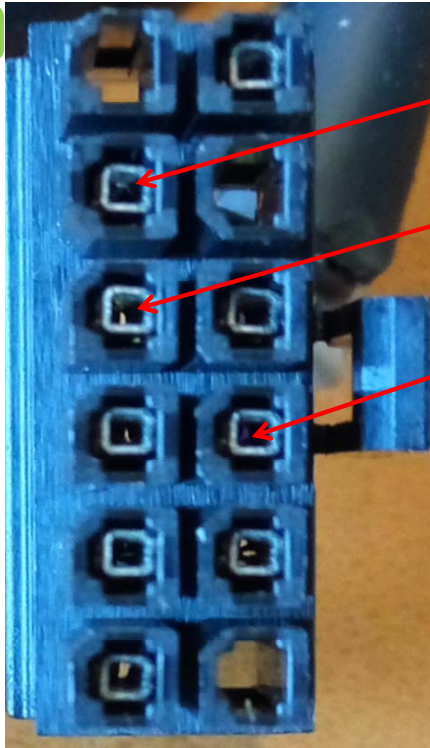


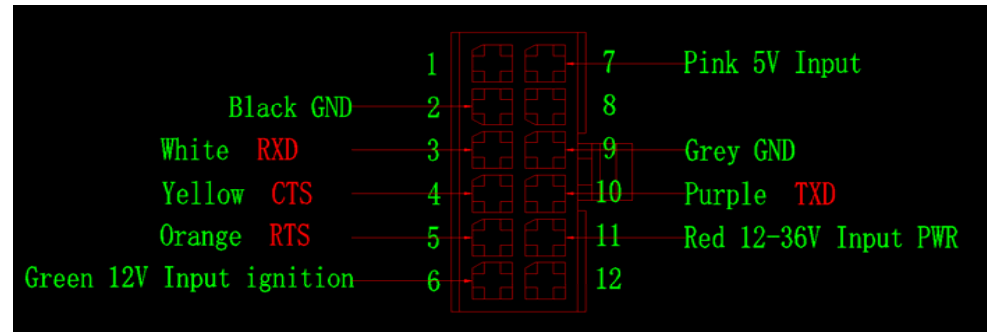
1



GND Cable color is black

RXD Cable color is white

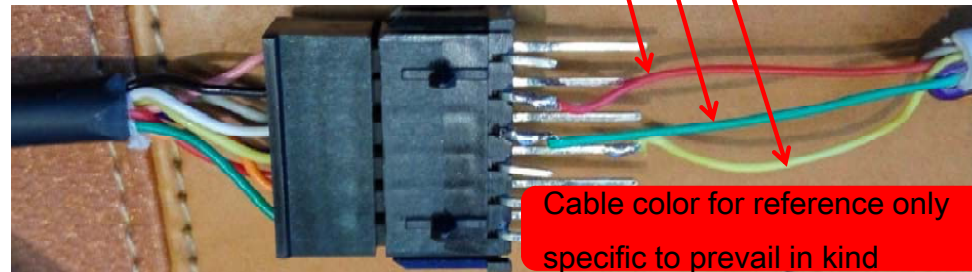
TXD Cable color is purple



DB9 female connector GND Cable color is red

DB9 female connector TXD Cable color is green

DB9 female connector RXD Cable color is yellow



TXD  
RXD  
GND

GND  
TXD  
RXD



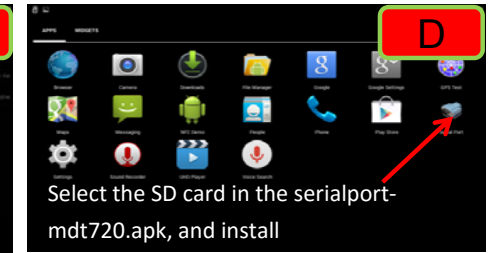
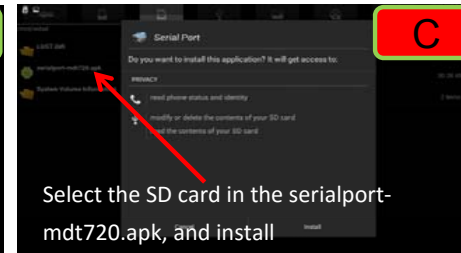
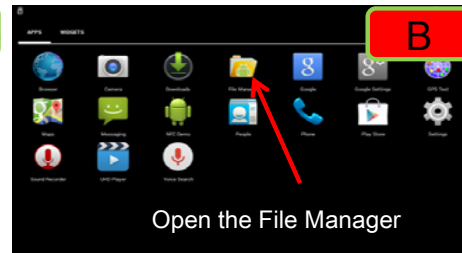
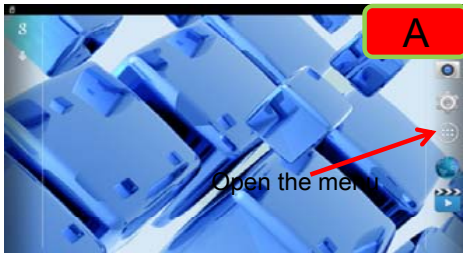
2



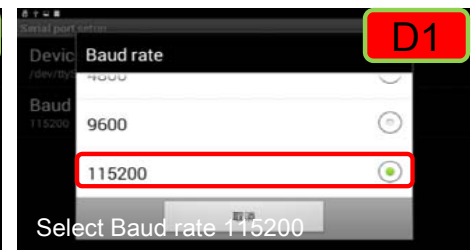
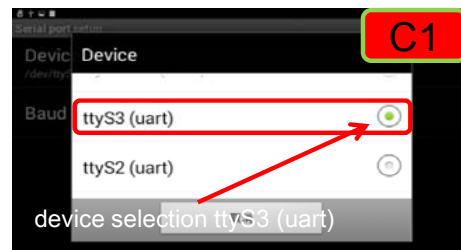
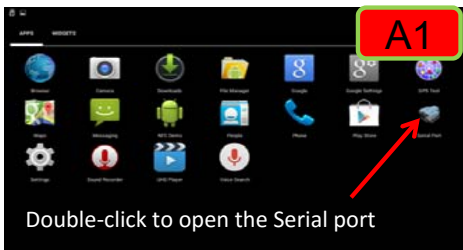
Cradle and cable connection diagram;

3 Prepare a mini SD card copy serialport-mdt720.apk, and installed device, follow the instructions below:

- 1、 Prepare a device and opened the device, then the prepared mini SD card into the SD connector;
- 2、 In accordance with the following figure A,B,C,D, the serialport-mdt720.apk, installed device;



4 Set Serial port parameters, refer to the figure A1,B1,C1,D1;



## 5

Data transmission and reception operation :

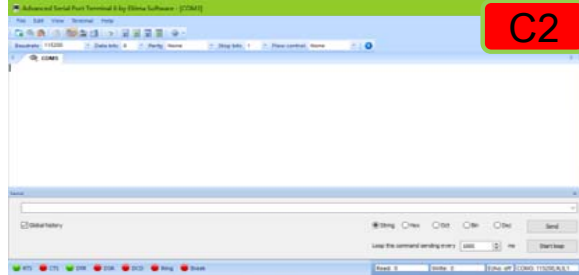
- 1、 Download Serial port tool and install it on your PC (Download link: <http://www.eltima.com/products/serial-port-terminal/>) ;
- 2、 Device and cradle grouped together and ready Cable and PC Connect with reference to the following figure E ;
- 3、 Open the "Advanced Serial Port Terminal" and equipment "serialport" in the PC, and then set the PC "Advanced Serial Port Terminal" parameter, and then open the "serialport" Click "Loopback", you will find on the PC "Advanced Serial Port Terminal" screen will display "UUUUUU ..... " Image A2, B2, C2, D2, E1, F1 ;
- 4、 Or open the PC "Advanced Serial Port Terminal", at the same time open the device "serialport" Select "Console", then "Advanced Serial Port Terminal" in the send field, enter any character (here I entered the Hello), you can see characters on the device (Hello); Also in the "serialport" of "Emission" field, enter any character (here I entered the Ha), you can see the character (Ha) on the PC Image A3,B3,C3 ;



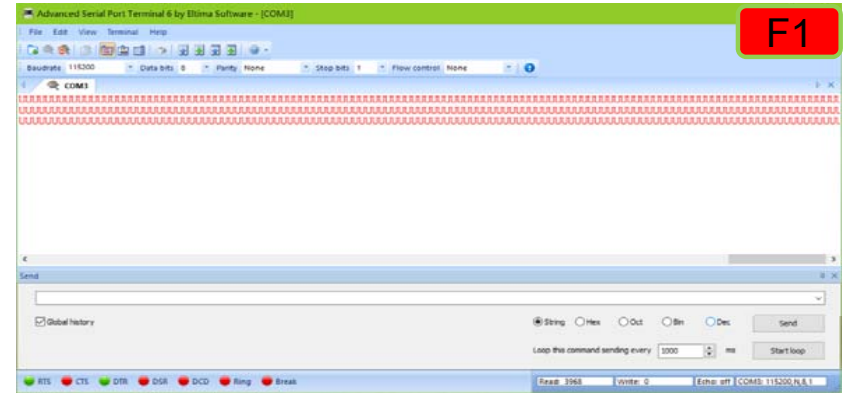
A2



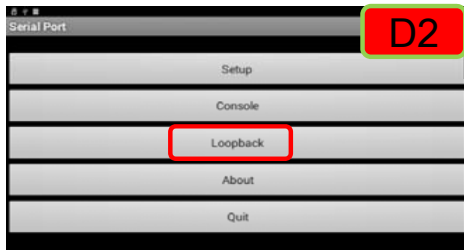
B2



C2



F1



D2



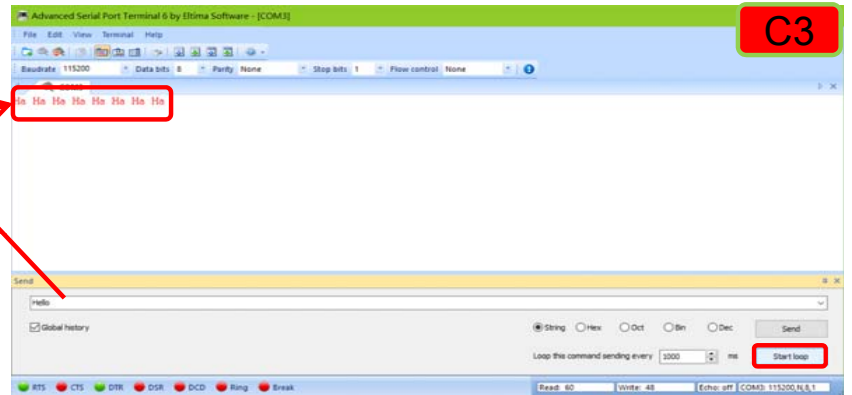
E1



A3



B3



C3